

# Alpha Digi-Optical 3D Printer

*New Generation Desktop 3D Printer*

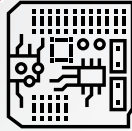
**NEW!**



## High Rigidity and Stability

- ▶ The Z-axis performance and printing speed are greatly improved with the combination of linear motion guide, stepper motor, anti-clearance nut, and the new tank design.

**NEW!**



## Integration Circuit Board

- ▶ Innovative integration circuit board increases printing and file transfer speed.

**NEW!**



## Support 3<sup>rd</sup> Party Software

- ▶ Compatible with 3<sup>rd</sup> party software, Chitubox, to create a more user-friendly printing experience.

### ▼ Spec.

### ▼ Alpha

Printing size (mm) W x D x H (mm)	150 x 84.4 x 120
XY Resolution	58um
Light engine pixels	2560 x 1440
Z-Layer Resolution	5um – 500um
Wavelength	385nm
Connections	Ethernet, USB
User Interface	5 inch touch screen





## Features

### Compact and user-friendly design

- ▶ With compact size and elegant appearance design, Alpha is welcomed by dental clinics, workshops and offices. Three-side open acrylic cover also provides a more user-friendly and spacious operation area.

### High precision and fast print speed

- ▶ Strictly control UV light engine uniformity and image distortion during manufacturing process.
- ▶ Built-in image optimization technology to correct image deviation caused by optical distortion and mechanism deviation, make the printing parts achieve advanced precision.

## Applications

### Jewelry Manufacture

- BV011A Jewelry Cast UHD GREEN



### Digital Dentistry

- BV005C Dental Model Caramel
- Keystone keySplint Soft® (Class IIa)
- Detax FREEPRINT® temp (Class IIa)

